

WWW.PROTECHAUDIO.COM

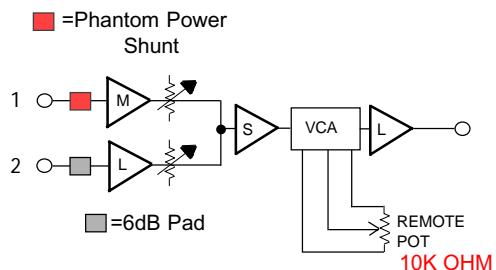
All Quicktrack products use a consistent ground scheme. The MXT-1 power supply provides the necessary ground conductor. Power supplies without the 3rd conductor ground should not be used with Quicktrack products.

CAUTION: Do not plug power supply into AC receptacle until the secondary conductors have been attached to the Quicktrack module. Doing so may cause the power supply conductors to short and damage the supply.

Installation steps for the Quicktrack modules are as follows;

- 1- Remove the cover screw (All modules except MX410) and cover.
- 2- Press down on the lower edge of the Quicktrack mounting extrusion until the lower edge of the printed circuit assembly comes free.
- 3- Slip the printed circuit assembly out of the upper edge of the mounting extrusion.
- 4- Mount the Quicktrack mounting extrusion in an appropriate location, away from moisture, heat sources, and AC fields.
- 5- Connect all audio connections to the barrier connector using double conductor shielded cables designed for low level audio signals. Do not use multiple solid conductor cables.
- 6- Connect the 3 power supply conductors to the power supply connection points on the barrier connector.
- 7- Plug the power supply into an AC receptacle.
- 8- Check for proper illumination of the LED power indicator.
- 9- Adjust all audio levels as necessary.
- 10- Mount the cover onto the Quicktrack module being careful not to over-tighten the mounting screw.

MODEL MX414



The Model MX414 has one mic input, and one line input, mixed to a common output. Both inputs have adjustable gain. The line input gain range can be increased by 6dB by removing push-on shunt at JP3.

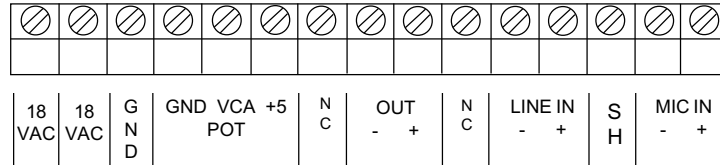
JP2 applies 15 volt phantom power to the mic input.

VR4 Adjusts range of remote pot.

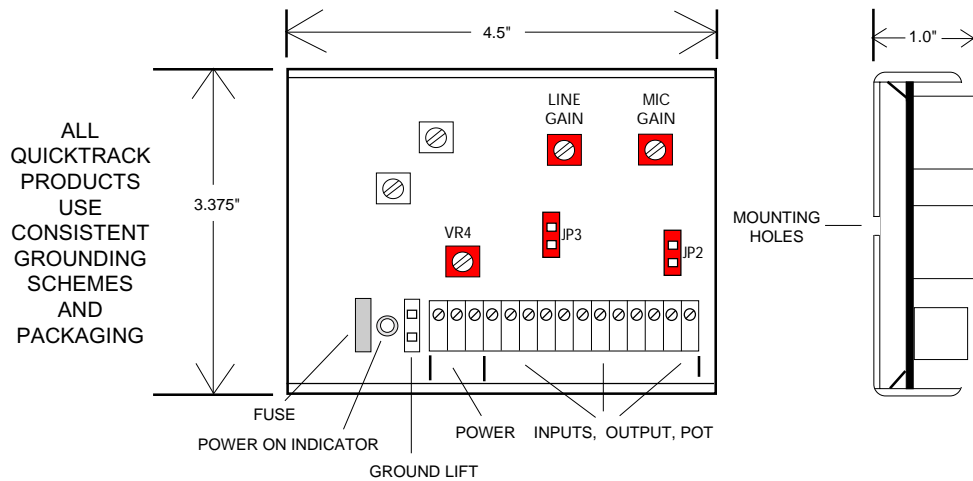
All inputs and the output are electronically balanced. The output may be used in either a balanced or unbalanced configuration. Requires low voltage AC power (See MXT-1).

All initial adjustments on the MX414 are made at the factory. If after installing the unit higher or lower output levels are desired, adjust inputs using trimpots as indicated.

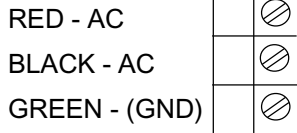
WWW.PROTECHAUDIO.COM



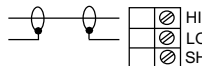
CONNECTIONS



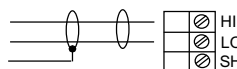
POWER FROM
MXT-1
TRANSFORMER



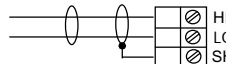
UNBALANCED LINE INPUT
CONNECTION



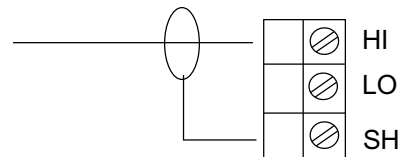
BALANCED LINE INPUT
CONNECTION



MICROPHONE INPUT
CONNECTION



UNBALANCED LINE OUTPUT
CONNECTION



BALANCED LINE OUTPUT
CONNECTION

